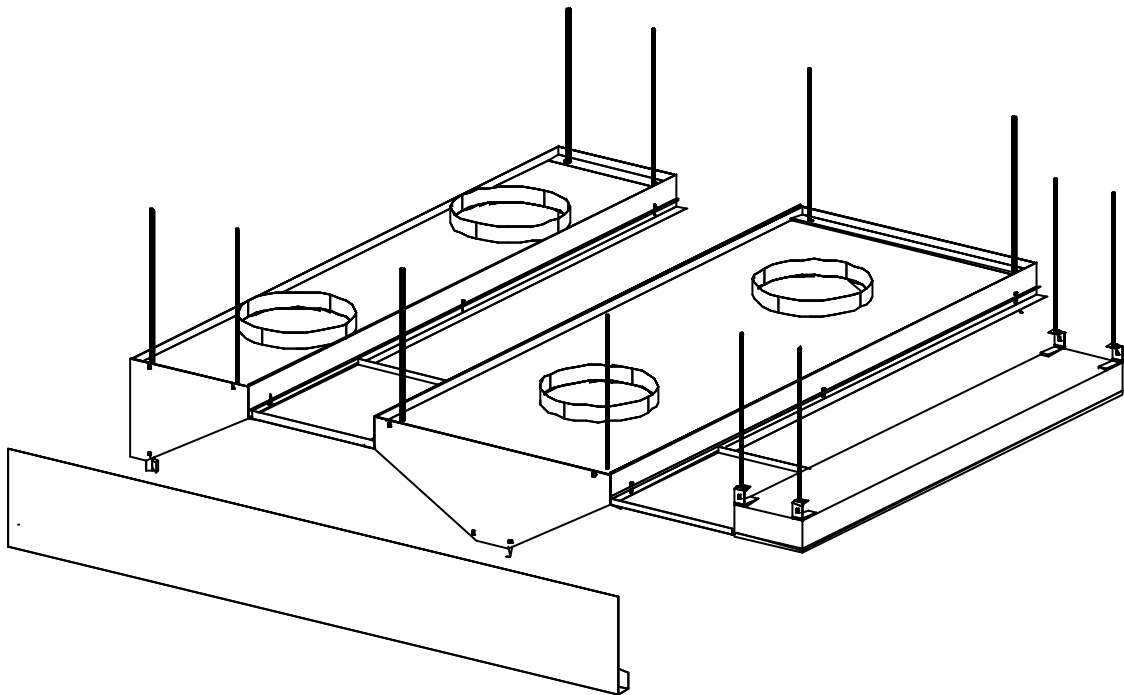


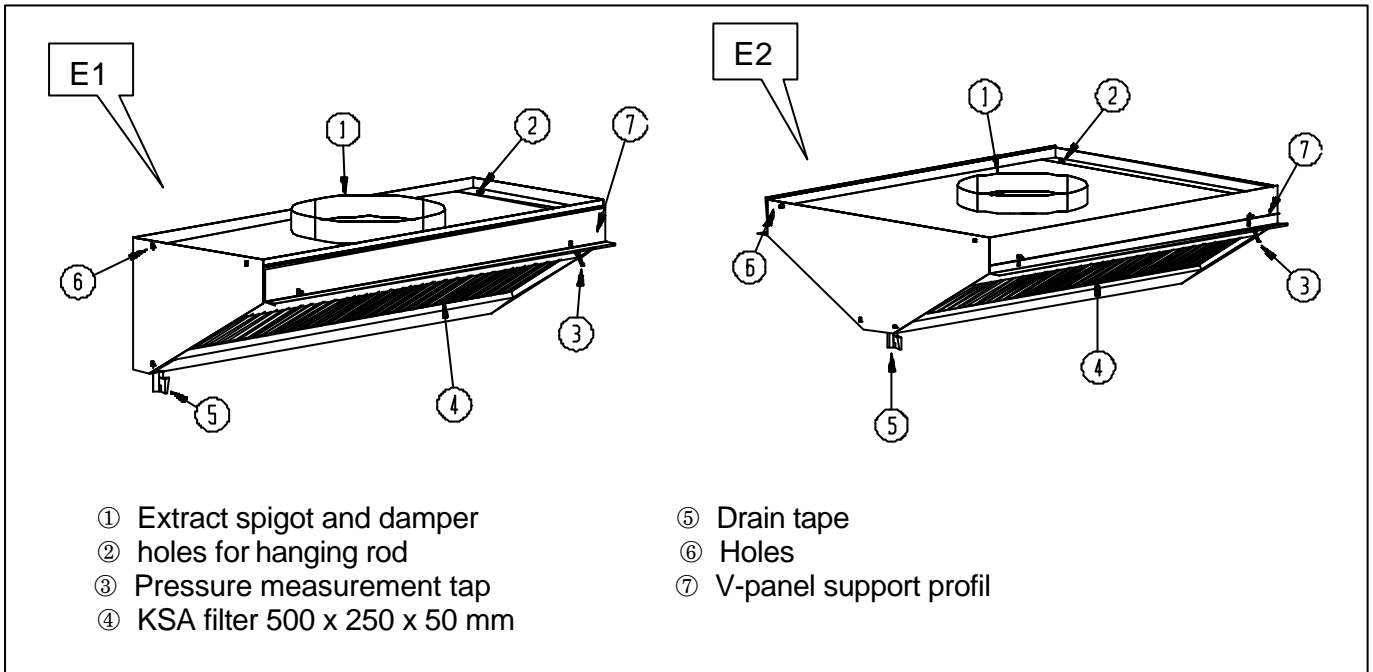
INSTALLATION GUIDE OF VENTILATED CEILING 'KCF'



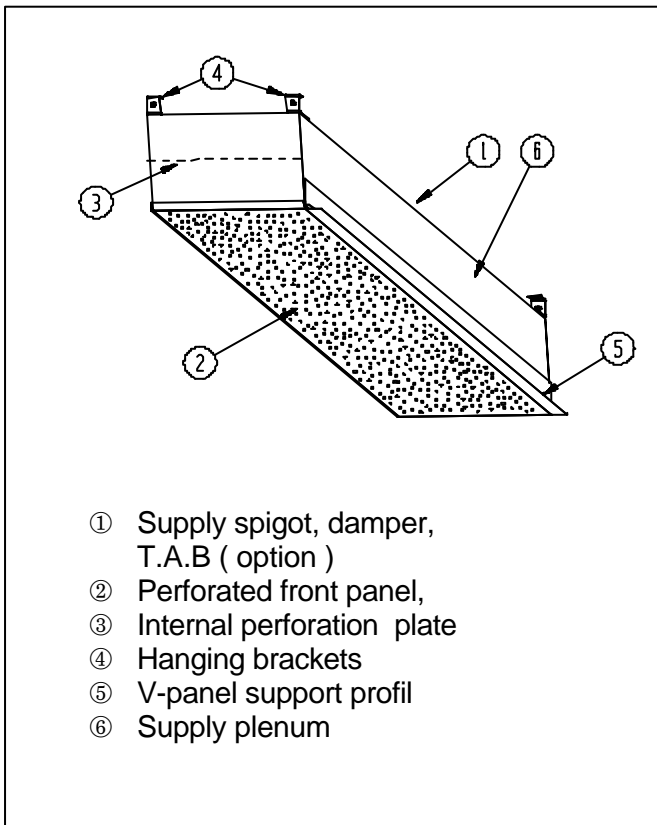
- 1. Modules presentation**
- 2. Installation**
- 3. Adjustment and Commissioning**

1. Modules presentation

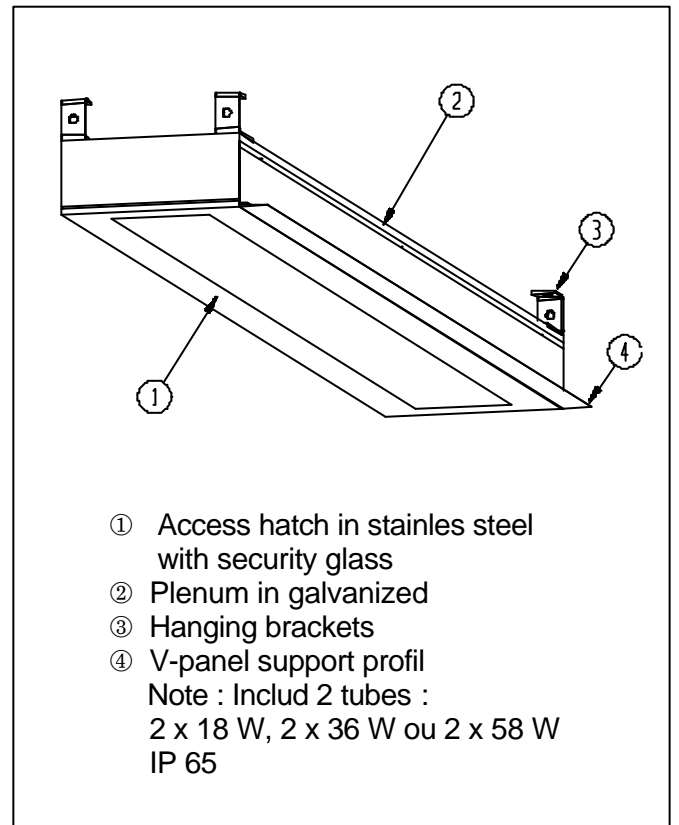
Extract modules : E1 et E2



Supply module : S

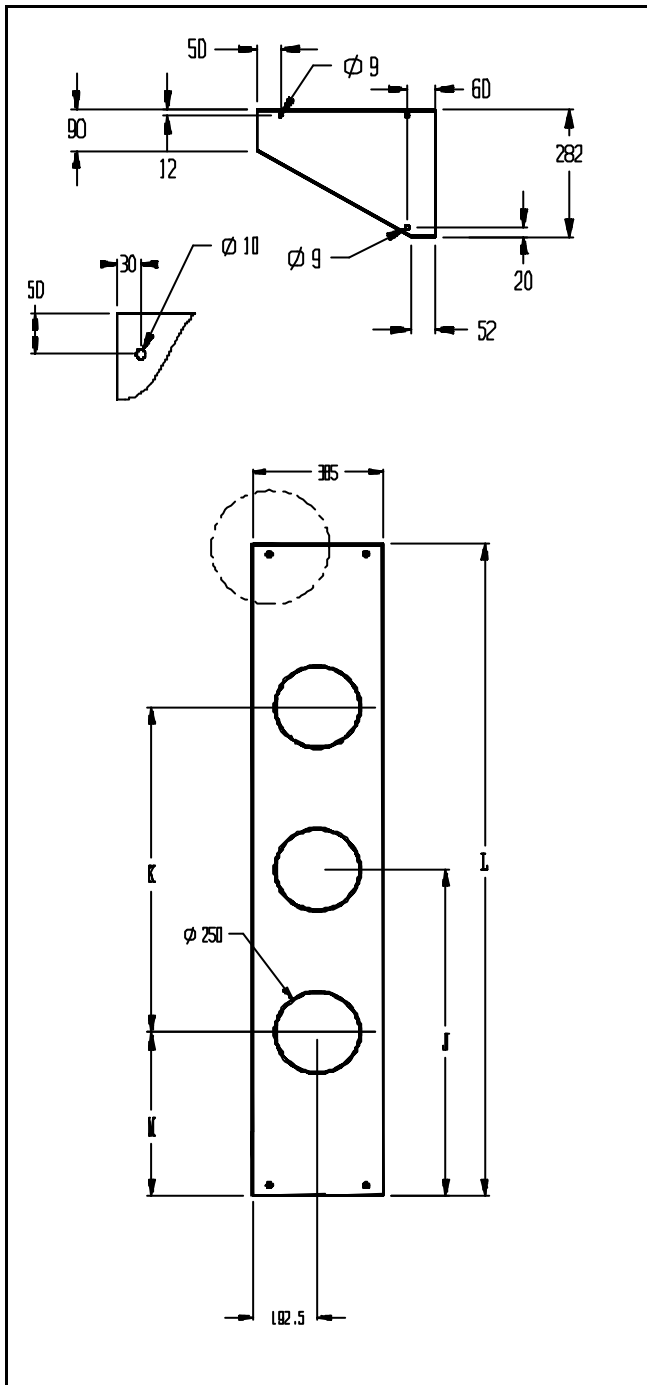


light module : L

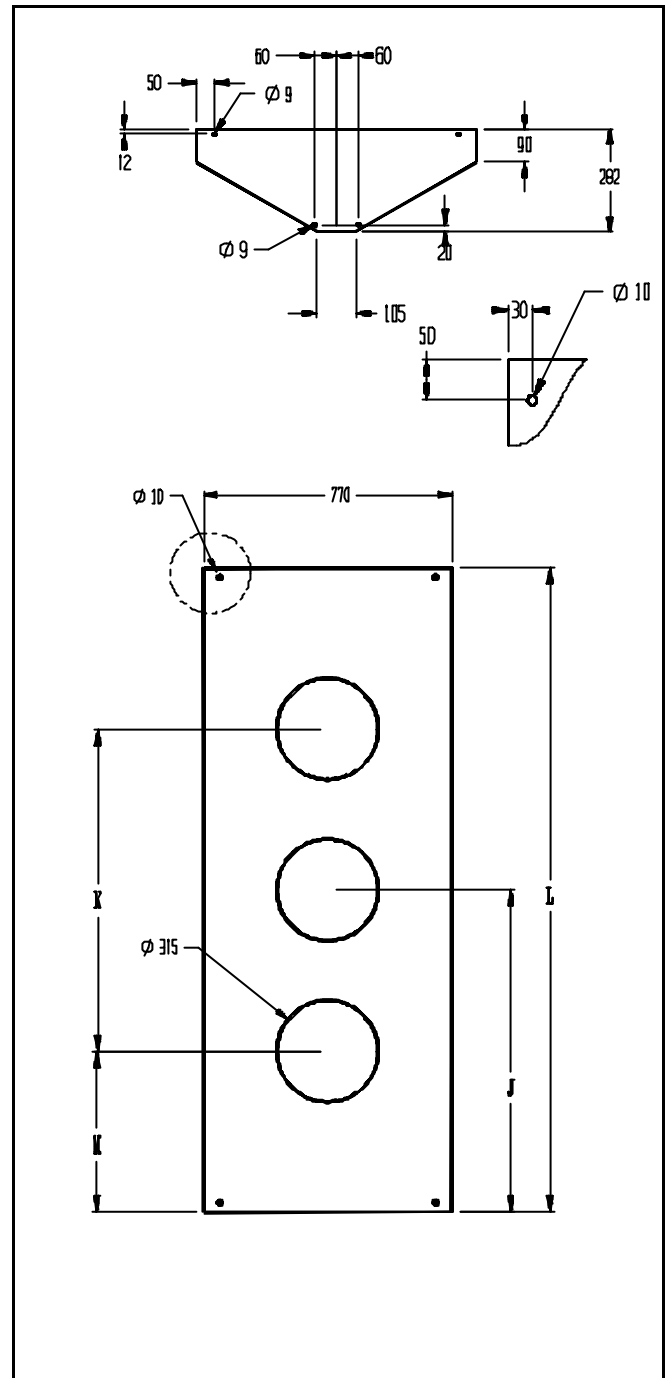


DIMENSIONS

MODULE E1



MODULE E2



Spigots location

E1

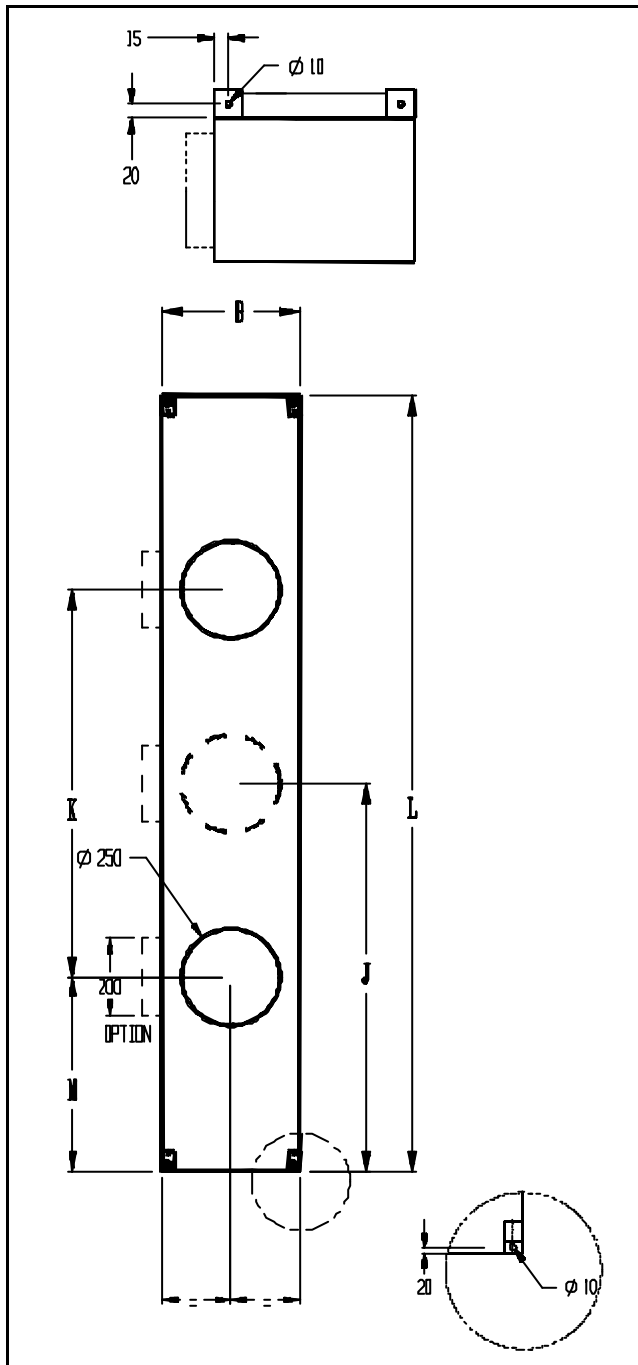
L	M	K	J	Spigots	
				Std.	Opt.
1500	375	750	750	1x 250	2x 250
2000	500	1000	1000	2x 250	3x 250
2500	500	1500	1250	2x 250	3x 250
3000	500	2000	1500	2x 250	3x 250

E2

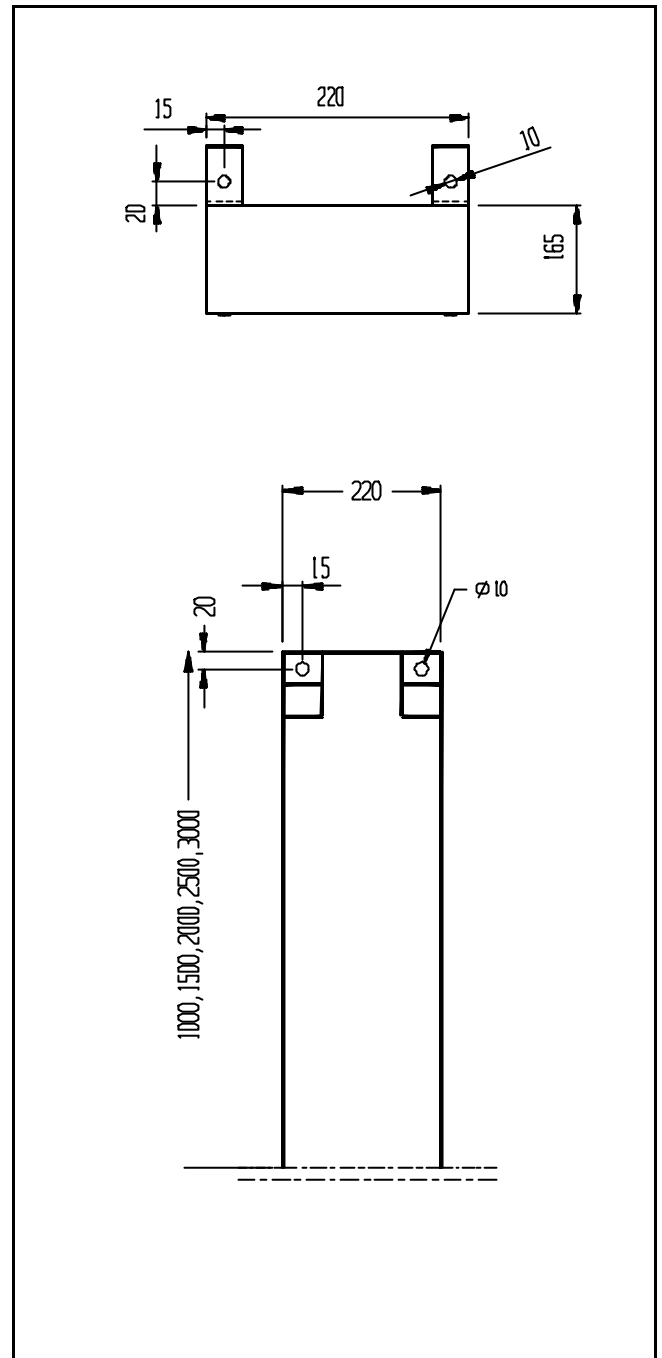
L	M	K	J	Spigots	
				Std.	Opt.
1500	375	750	750	1x 315	2x 315
2000	500	1000	1000	2x 315	3x 315
2500	500	1500	1250	2x 315	3x 315
3000	500	2000	1500	2x 315	3x 315

DIMENSIONS

MODULE S



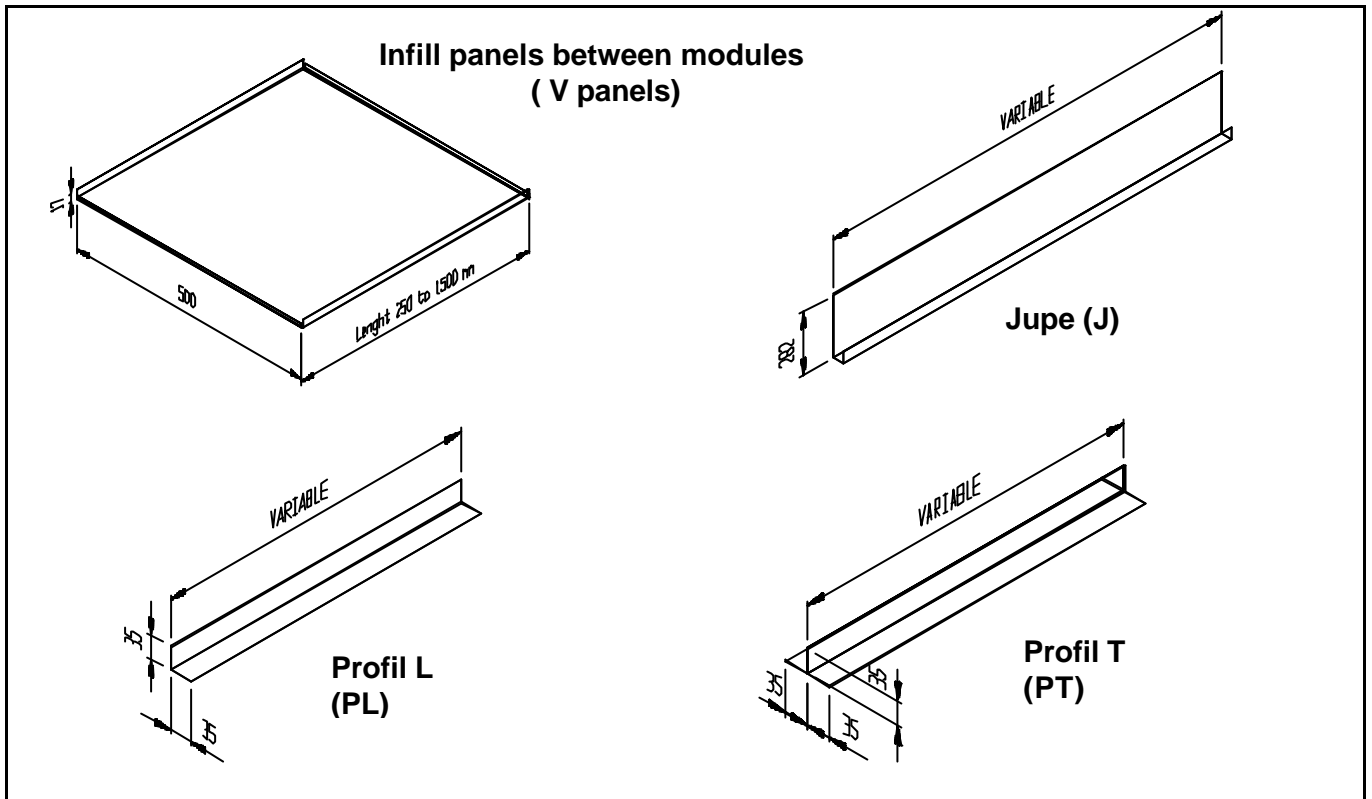
MODULE L



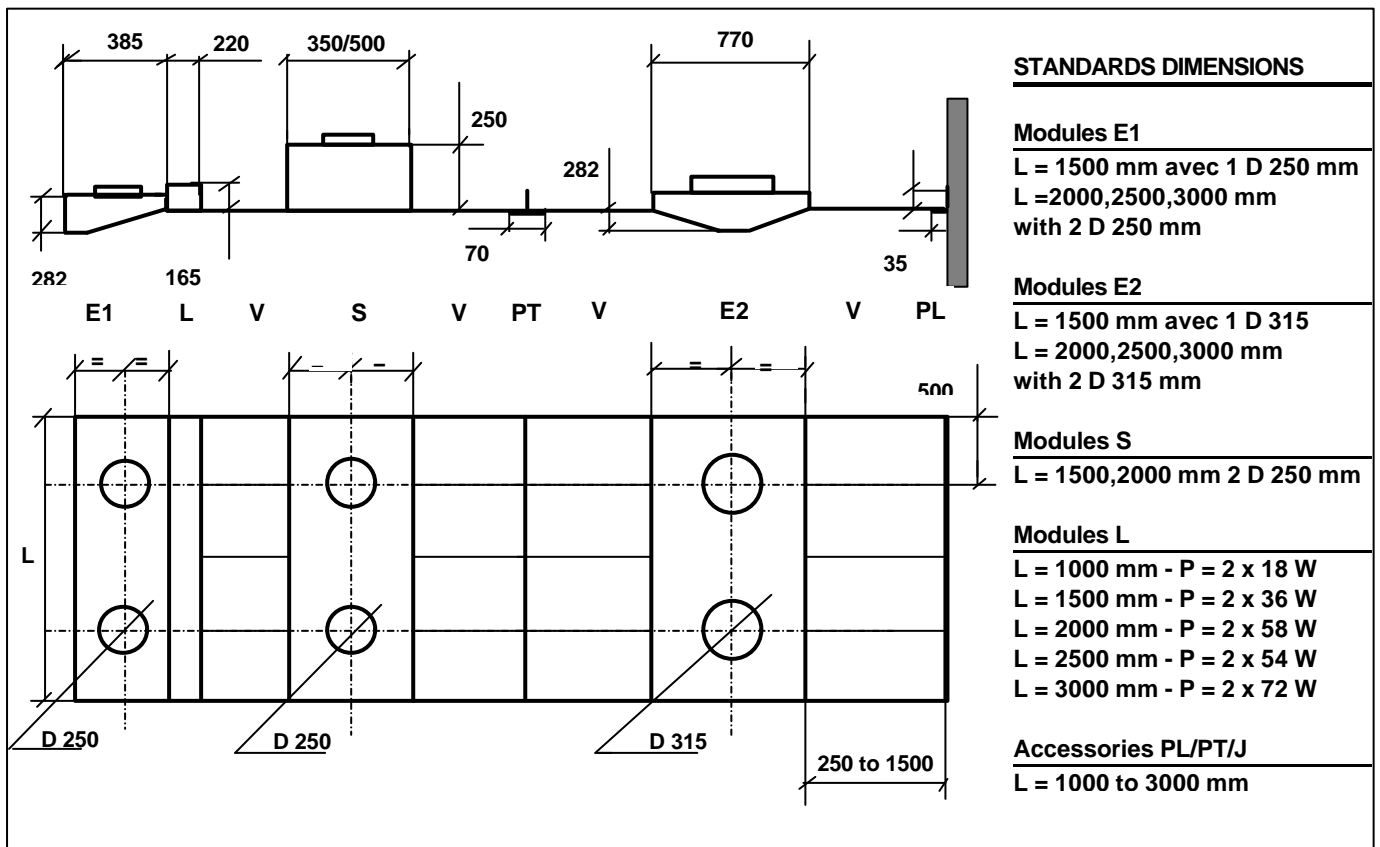
Spigots location Module S

B	L	M	K	J	Spigots		OPTION	
					Std.	Opt.	Std.	Opt.
350 500	1500	375	750	-	2 x D250	-	2 x D200	-
	2000	500	1000	-	2 x D250	3 x D250	2 x D200	3 x D200
	2500	500	1500	1250	3 x D250	3 x D250	3 x D200	3 x D200
	3000	500	2000	///	4 x D250	3 x D250	4 x D200	3 x D200

Dimensions of accessories



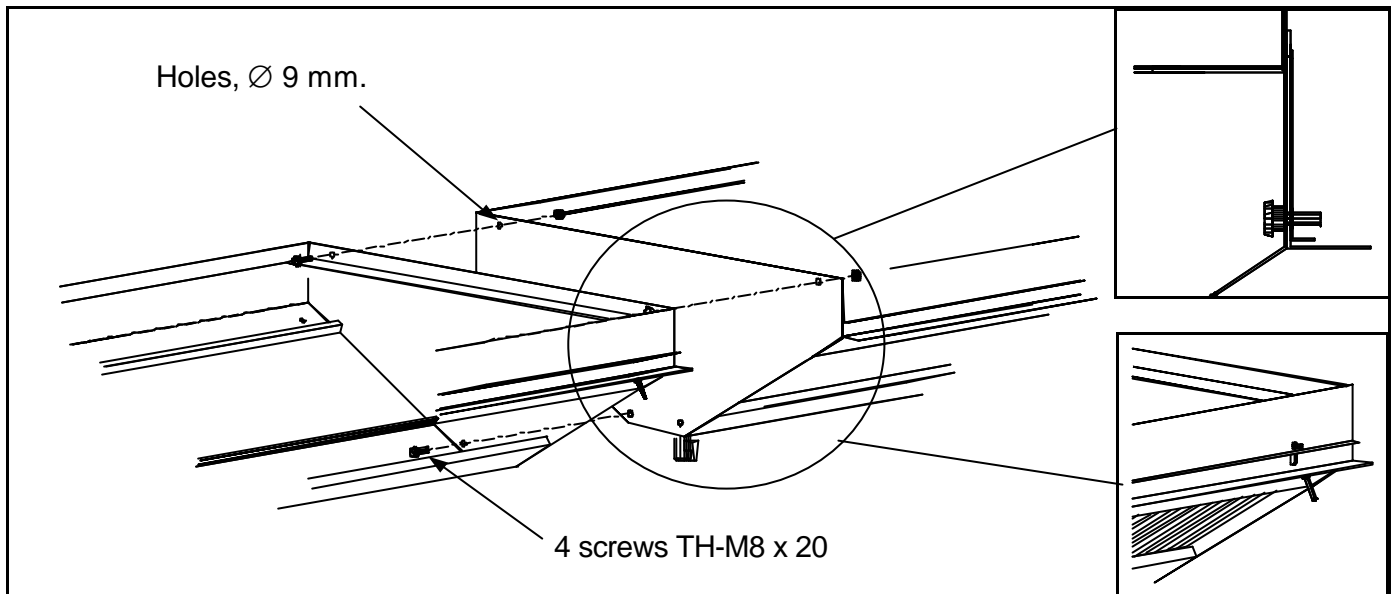
DIMENSIONS



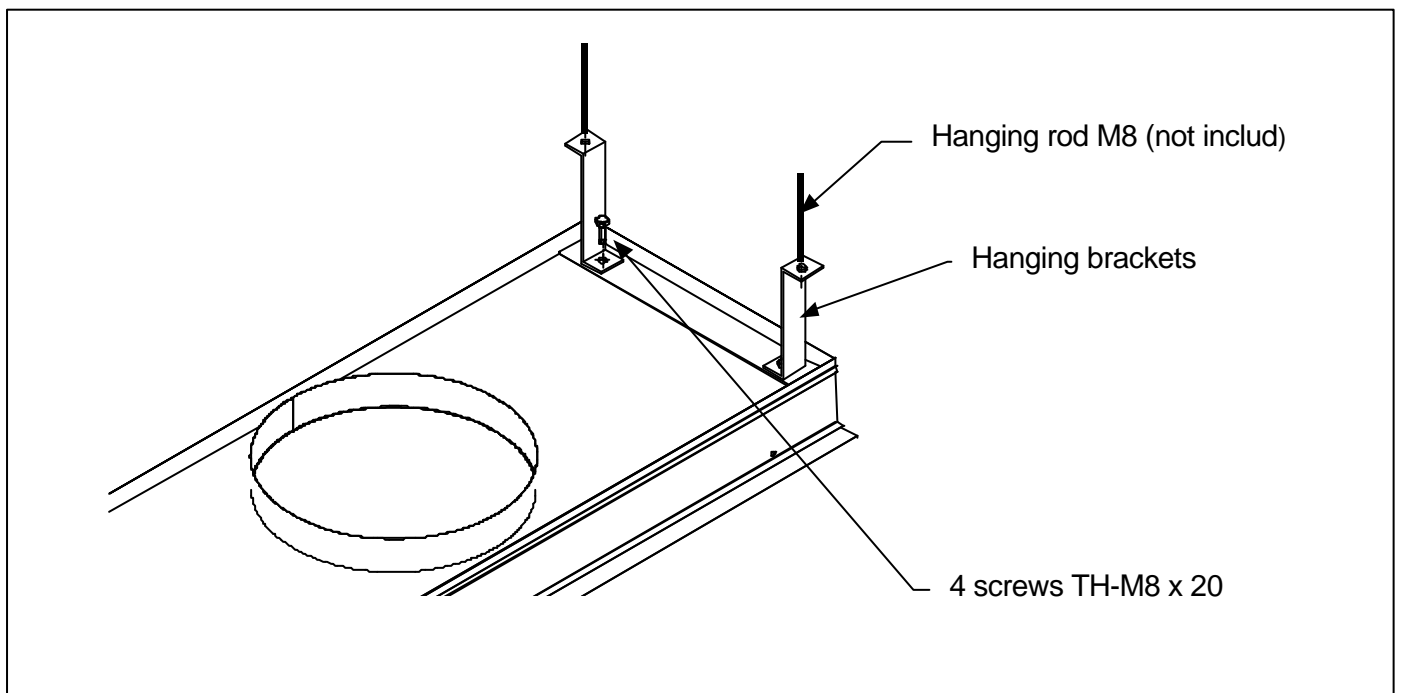
2. INSTALLATION

INSTALLATION – Extract modules E1/E2

Fixing between modules

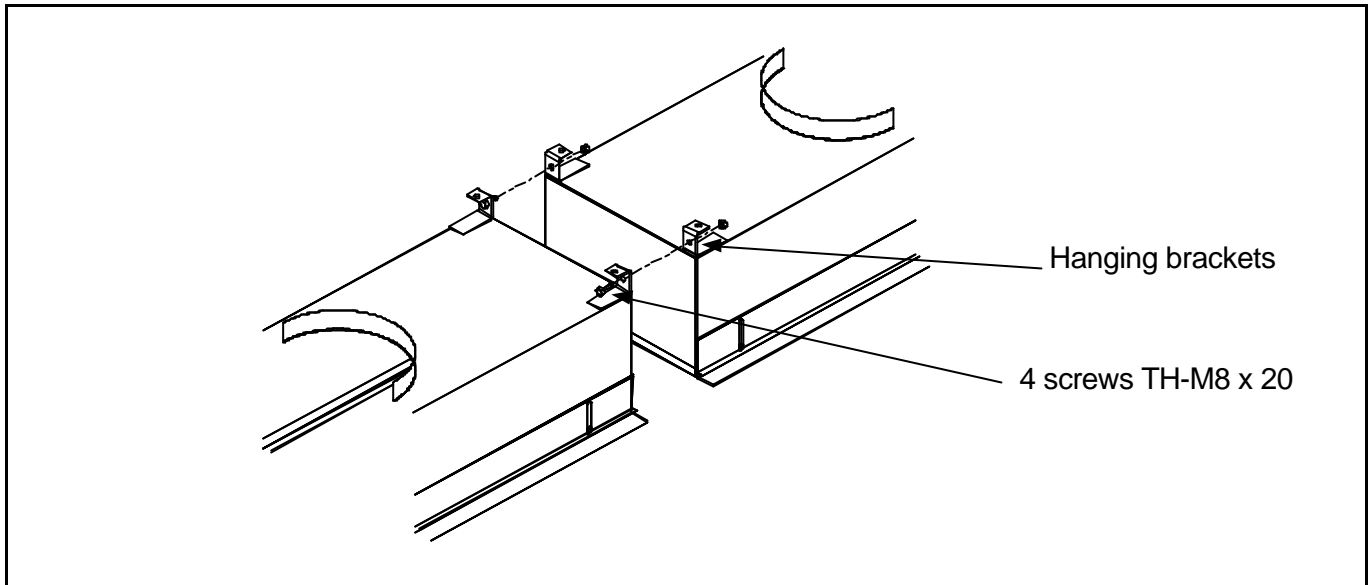


Supporting

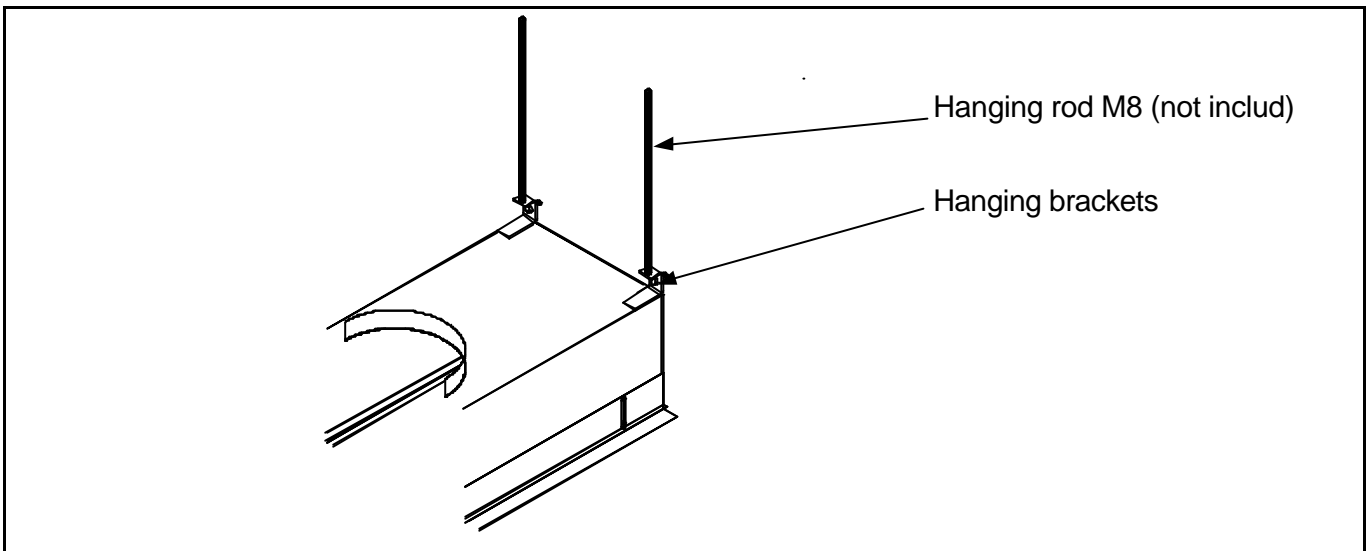


INSTALLATION - Supply module "S" and Light "L"

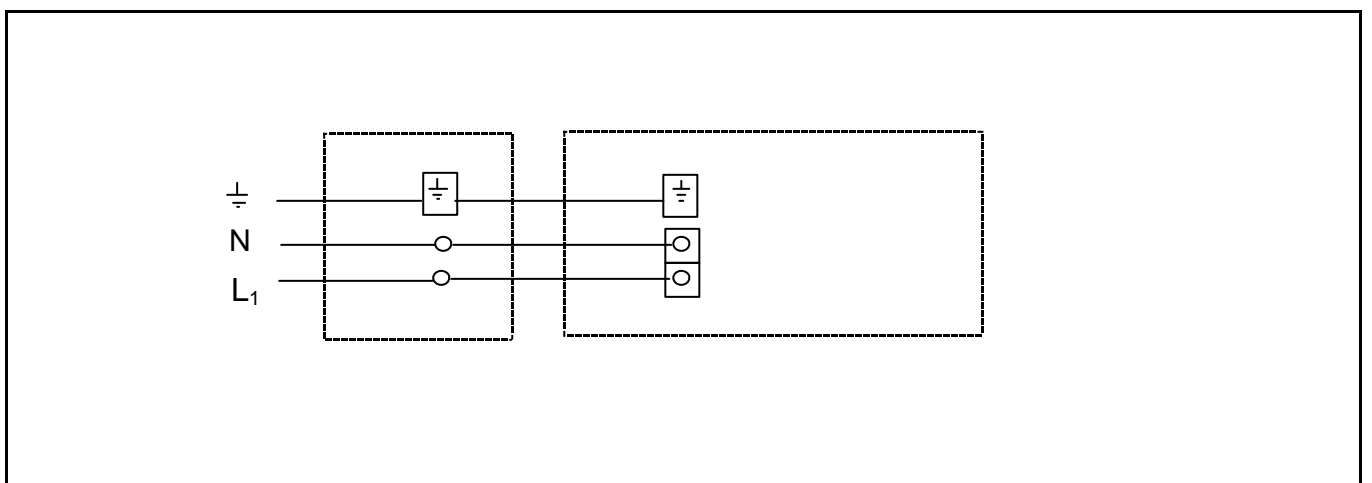
Fixing between modules



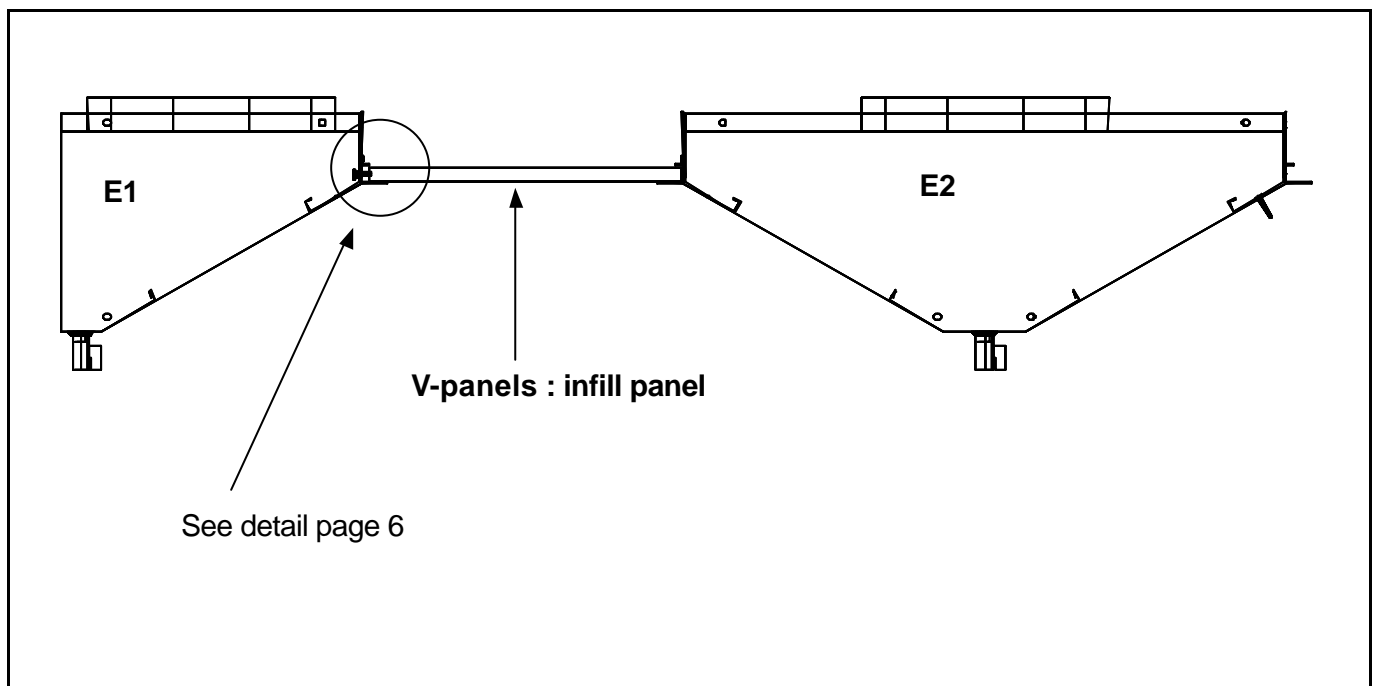
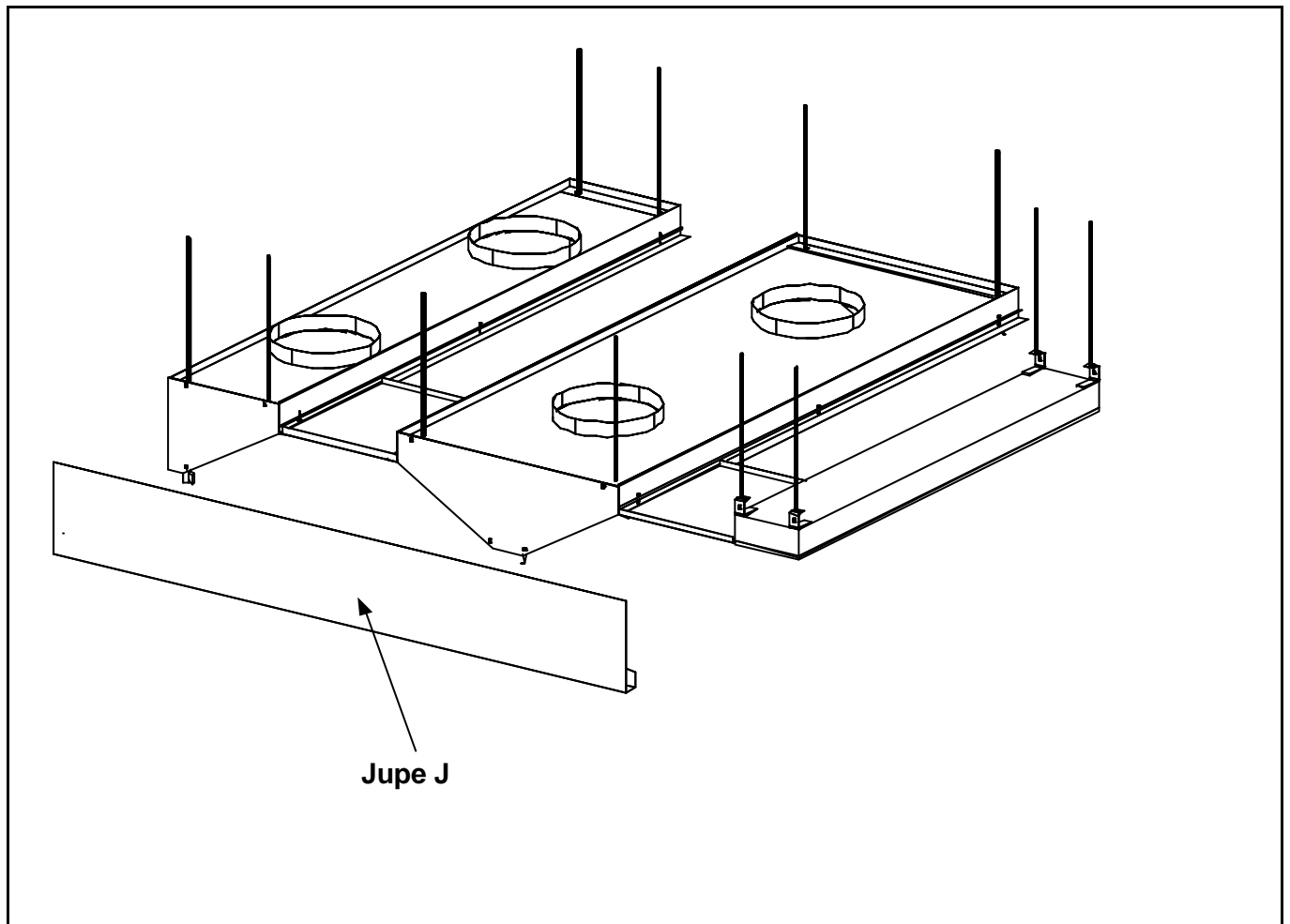
Supporting



Electrical connexions

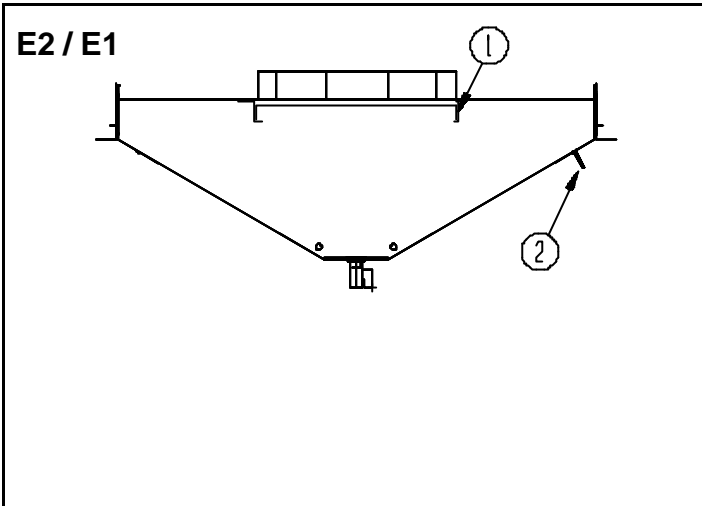


Assembly Installation with accessories



3. Measurement and air flow control

Exhaust air flow

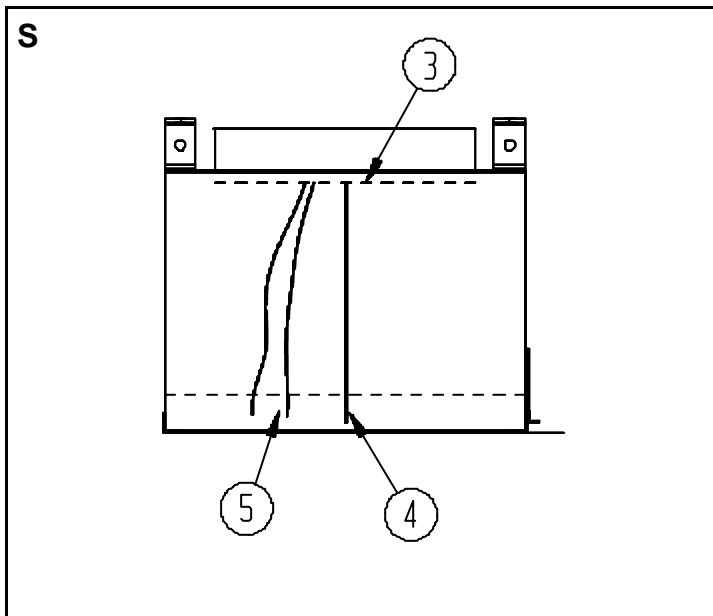


The exhaust air flow can be controlled by a damper (1) through the exhaust air chamber. The air flow is measured using a measurement tap (2).

IMPORTANT:

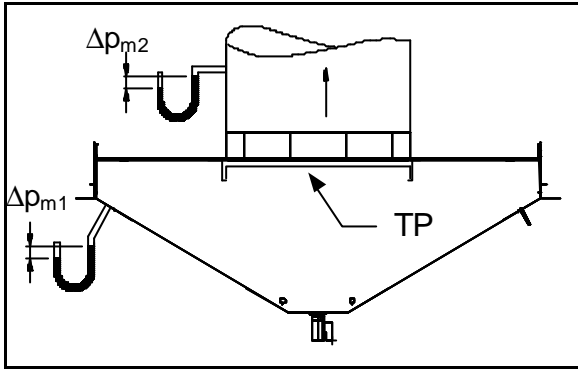
The recommended pressure drop of filters is between 25 and 100 Pa.

Supply air flow

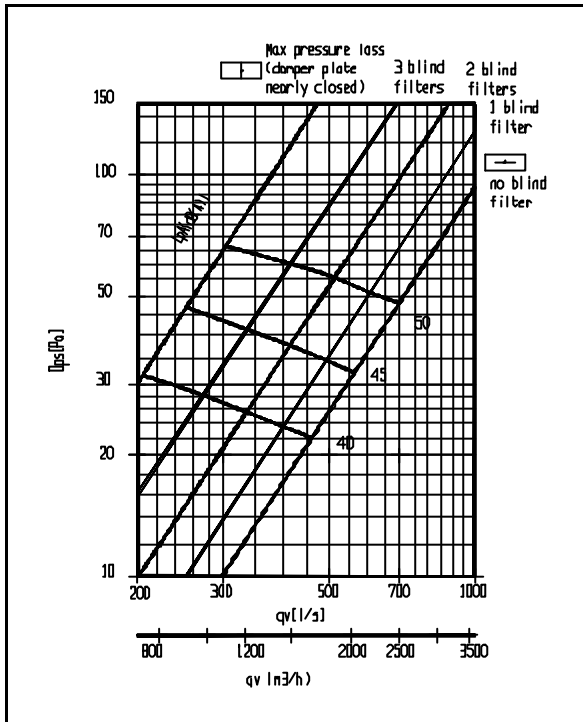


The supply air is controlled by adjusting (4) the damper (3) in the supply spigot and the air flow is measured using the measurement tap (5) (Optional MSM).

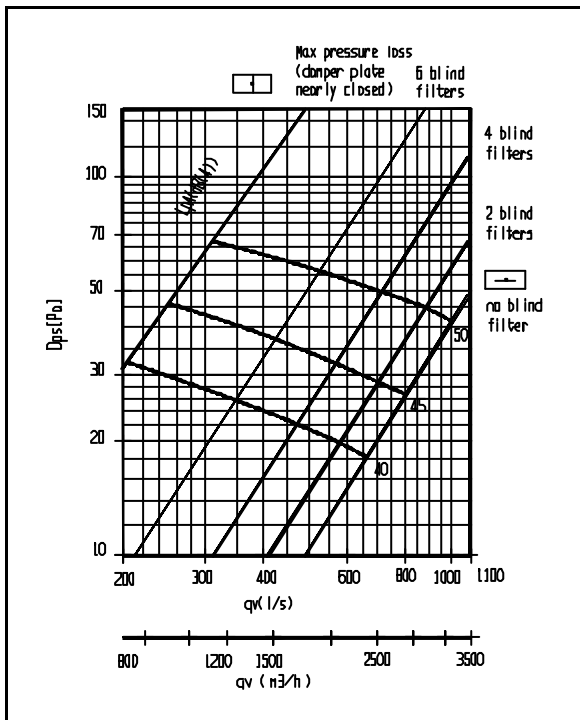
Extract modules E1/E2 – Pressure drop and noise level



E2 1500



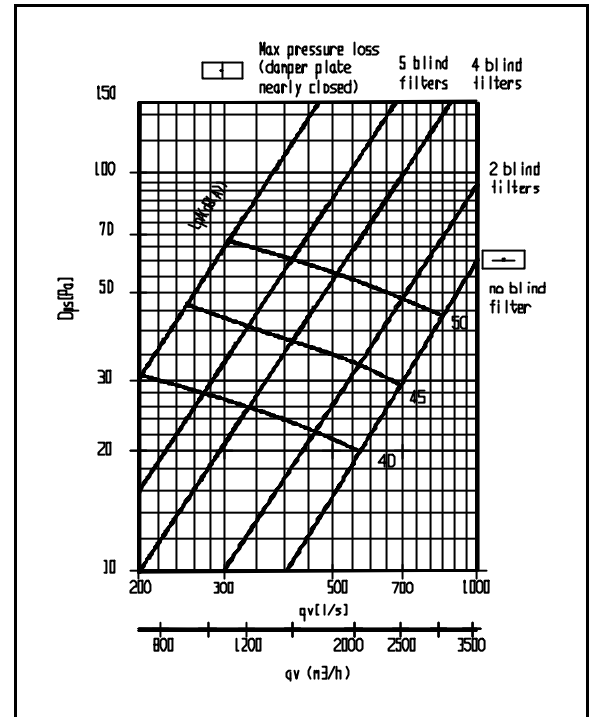
E2 2500



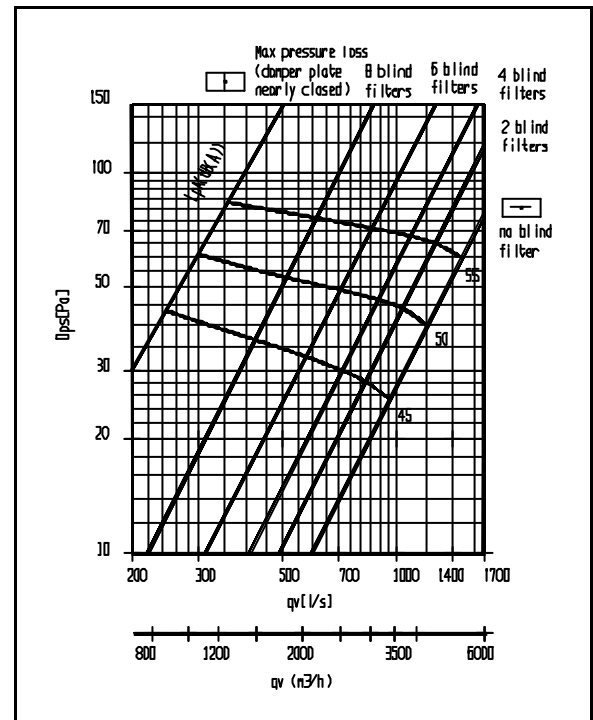
P.10

Recommended pressure drop for KSA filter : $D_{p_{m1}}$ 25-100 Pa.

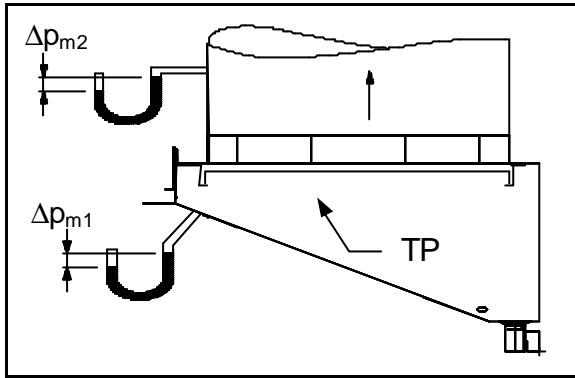
E2 2000



E2 3000

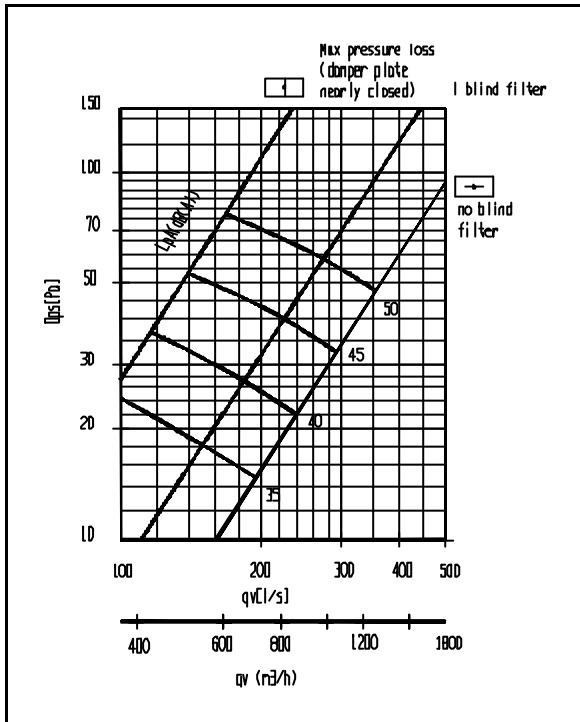


Extract modules E1/E2 – Pressure drop and nose level

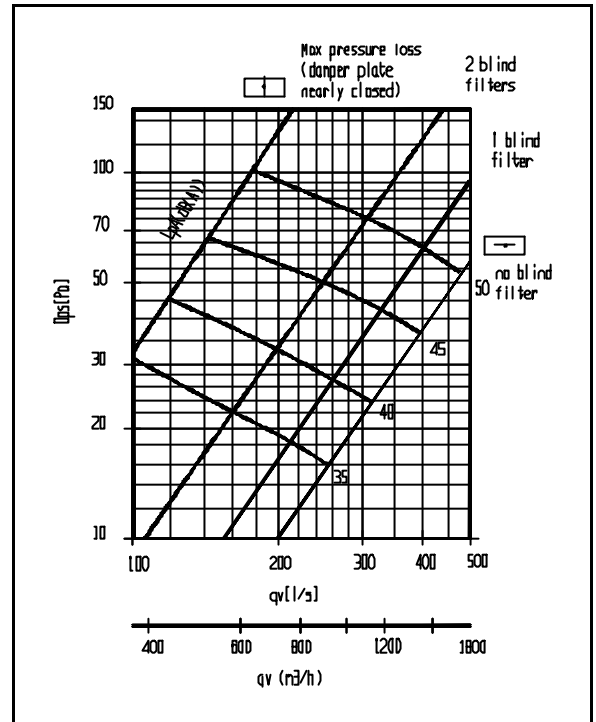


Recommended pressure drop for KSA filter : Δp_{m1} 25-100 Pa.

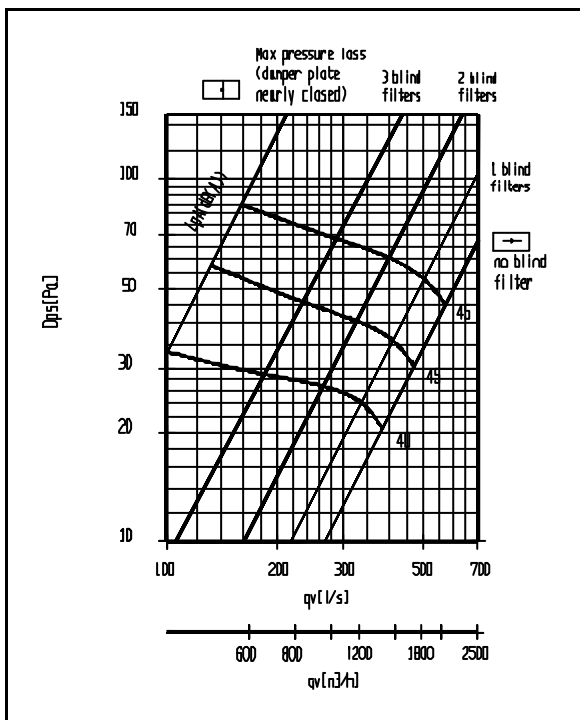
E1 1500



E1 2000



E1 2500



E1 3000

