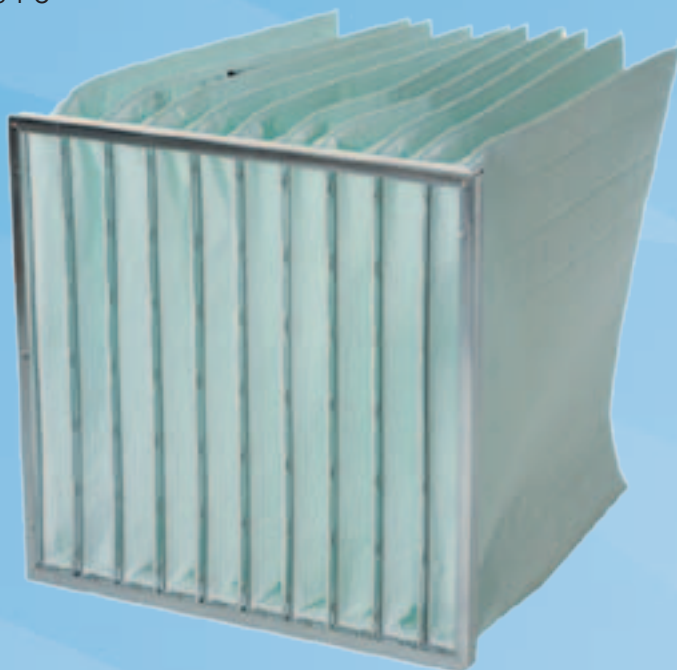


BAG FILTERS

Synthetic Fine Filters F6

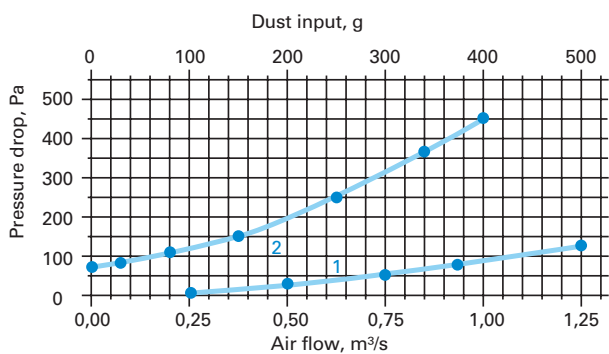


Typical applications

Fine filters are designed for purification of intake and circulation air in air-conditioning systems installed in facilities such as offices, public premises and industry. In more demanding conditions, class F6 filters can be used as pre-filters for HEPA filters. The synthetic F6 filter can also be used in conditions requiring special moisture resistance.

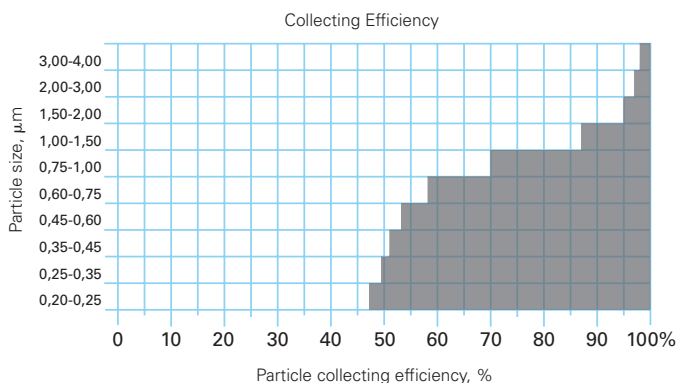
Materials

The materials of the synthetic fine filters are high-quality and durable, progressive mounted synthetic fibres.



Curve 1
Pressure drop as a function of air volume flow (clean filter)

Curve 2
Pressure drop as a function of dust input with the test volume flow



Structure

The inner and outer frames of the filters are made of galvanized steel or incinerable plastic. To ensure tightness, the filter pockets are glued to the outer frame. Correct opening of the filter pockets is ensured by using distance holders sewn on the fabric; reliable and correct functionality as well as high dust holding capacity is thus ensured. The sewing seams are sealed with hot melt glue.

Sizes

Halton Clean Air Oy is offering a wide selection of standard filter sizes. As per special order, we can also manufacture filters with tailored dimensions.

Quality and environment

The operations of Halton Clean Air Oy are certified with the ISO 9001:2000 Quality and ISO 14001 Environmental standards.

Specifications

Filter class EN 779:2002	F6		
Initial pressure loss	71 Pa		
Initial efficiency*	0,4 µm 51 %	1,0 µm 75 %	2,5 µm 98 %
Material	Polyester / polypropylene		
Frame	Galvanized steel / plastic		
Max. operating temperature	75 °C		
Relative humidity	Max. 100 %		

* before electrostatic discharging